

CERTIFICATE OF LOCATION OF GOVERNMENT CORNER

NORTHEAST Corner of Section 25, Township 107, Range 43, 5TH P.M.

STATE OF MINNESOTA, County of MURRAY

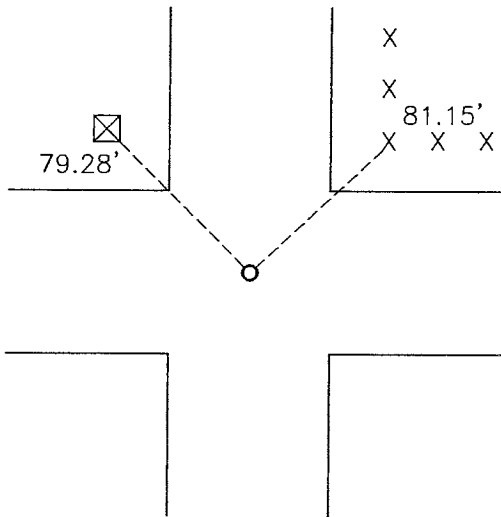
At the corner location shown on the sketch:

On 05-18-2011 found a 3/4" iron.
DATE

left monument as found, lowered monument, removed monument (explain)

On 05-18-2011 placed a 1" pipe with seal #43844.
DATE

SKETCH OF REFERENCE TIES



Minnesota State Plane Coordinate
System Murray County Datum
NAD83 (1996)

N: 174210.480
E: 453458.381

SE corner of electric box NW 79.28'
Nail and seal in corner fence post NE 81.15'

Statement of evidence relative to this corner location is on back of page.

I hereby certify that this document and the data contained herein was prepared by me or under my direct supervision.

James H. Bunker 1/23/12
SIGNATURE DATE

Registration No. 43844

Land Surveyor, Professional Engineer
 County Surveyor, County Engineer

OFFICE OF THE COUNTY RECORDER
County of _____

I hereby certify that this document was filed in the Co. Recorders office at _____ .M on the _____ day of JAN 25 2012 A.D. 20____

County Recorder James V. Johnson
By _____, Deputy

DOCUMENT NO. _____

Statement of Evidence

(No Date) J. W. Myers did the original survey of the township lines.

(No Date) Minnesota Department of Transportation highway plans north the corner is to be at the P.I. of the roads.

On June 13, 1962, the Murray County Highway Department found a steel pin at the surface of the road.

On May 18, 2011, Bueltel-Moseng Land Surveying found a $\frac{3}{4}$ " iron at the corner. We set a 1" iron with seal #43844 over the iron.